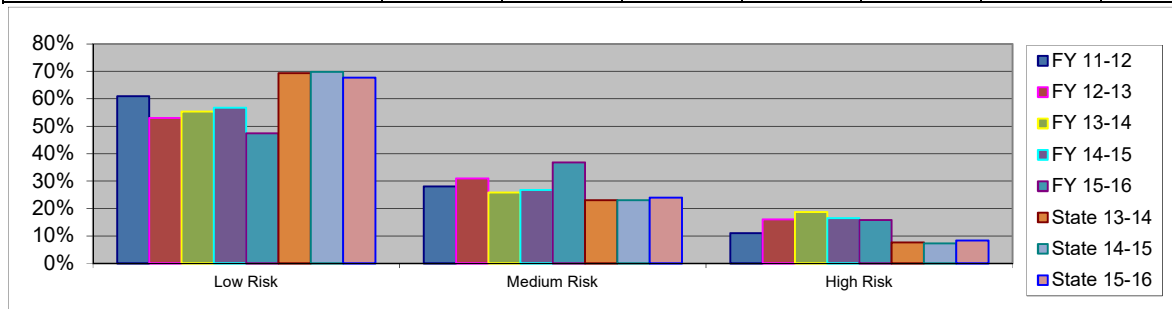


RISK ASSESSMENT COMPARISON DATA
for FY 11-16

Durham

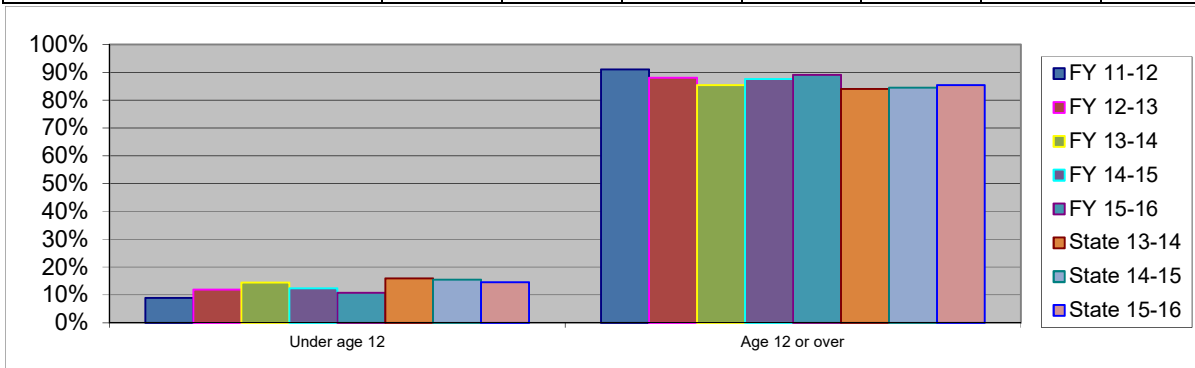
	FY 11-12	FY 12-13	FY 13-14	FY 14-15	FY 15-16	State 13-14	State 14-15	State 15-16
Total	497	478	309	273	193	14,218	13,956	13,187

Overall Risk Level	FY 11-12	FY 12-13	FY 13-14	FY 14-15	FY 15-16	State 13-14	State 14-15	State 15-16
Low Risk	61%	53%	55%	57%	47%	69%	70%	68%
Medium Risk	28%	31%	26%	27%	37%	23%	23%	24%
High Risk	11%	16%	19%	16%	16%	8%	7%	8%



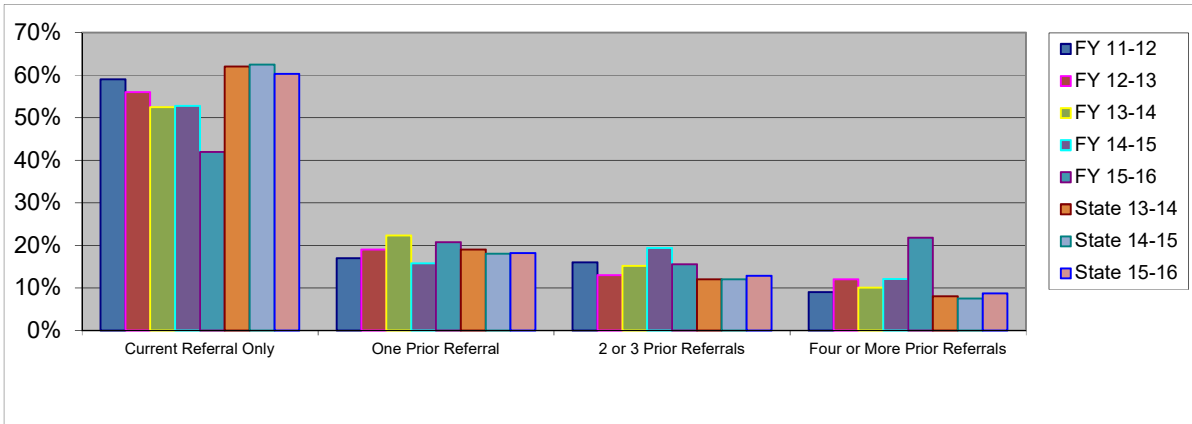
Observations:

R1 - Age When First Delinquent Offense Alleged in a Complaint	FY 11-12	FY 12-13	FY 13-14	FY 14-15	FY 15-16	State 13-14	State 14-15	State 15-16
Under age 12	9%	12%	15%	12%	11%	16%	16%	15%
Age 12 or over	91%	88%	85%	88%	89%	84%	84%	85%



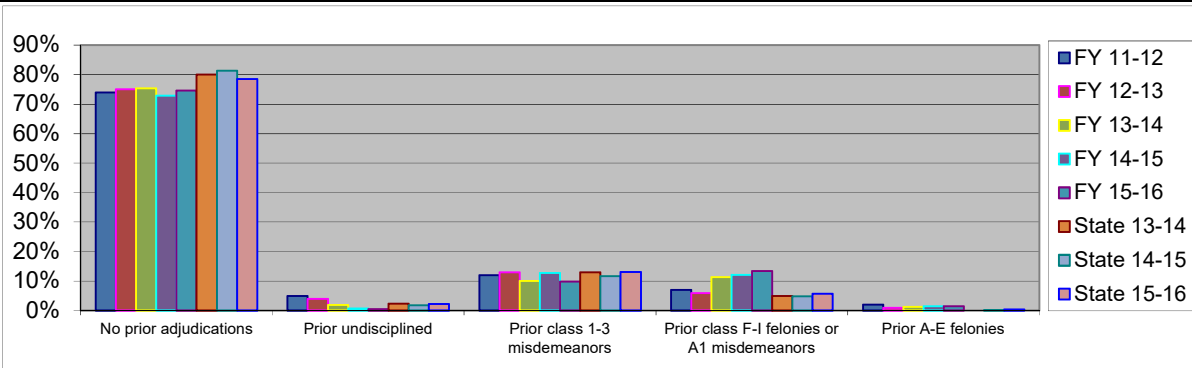
Observations:

R2 - Number of Undisciplined or Delinquent Referrals at Intake	FY 11-12	FY 12-13	FY 13-14	FY 14-15	FY 15-16	State 13-14	State 14-15	State 15-16
Current Referral Only	59%	56%	52%	53%	42%	62%	62%	60%
One Prior Referral	17%	19%	22%	16%	21%	19%	18%	18%
2 or 3 Prior Referrals	16%	13%	15%	19%	16%	12%	12%	13%
Four or More Prior Referrals	9%	12%	10%	12%	22%	8%	8%	9%



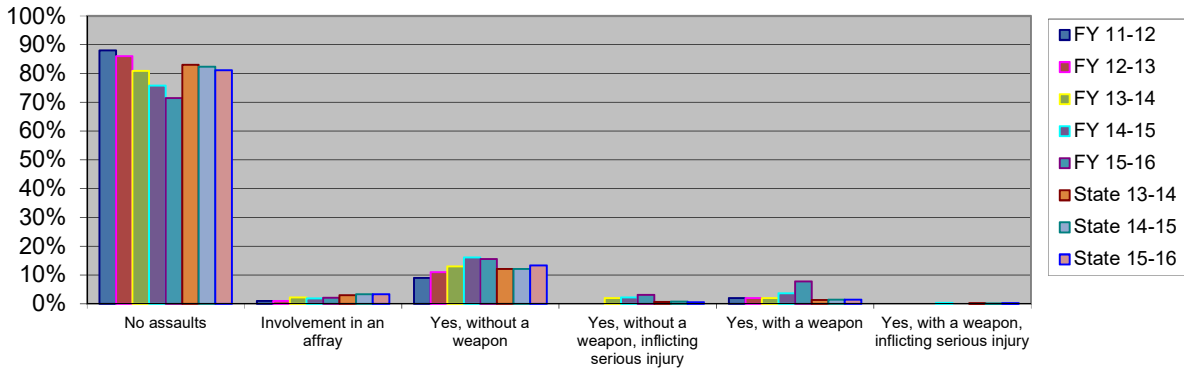
Observations:

R3 - Most Serious Prior Adjudication	FY 11-12	FY 12-13	FY 13-14	FY 14-15	FY 15-16	State 13-14	State 14-15	State 15-16
No prior adjudications	74%	75%	75%	73%	75%	80%	81%	78%
Prior undisciplined	5%	4%	2%	1%	1%	2%	2%	2%
Prior class 1-3 misdemeanors	12%	13%	10%	13%	10%	13%	12%	13%
Prior class F-I felonies or A1 misdemeanor	7%	6%	11%	12%	13%	5%	5%	6%
Prior A-E felonies	2%	1%	1%	1%	2%	0%	0%	0%



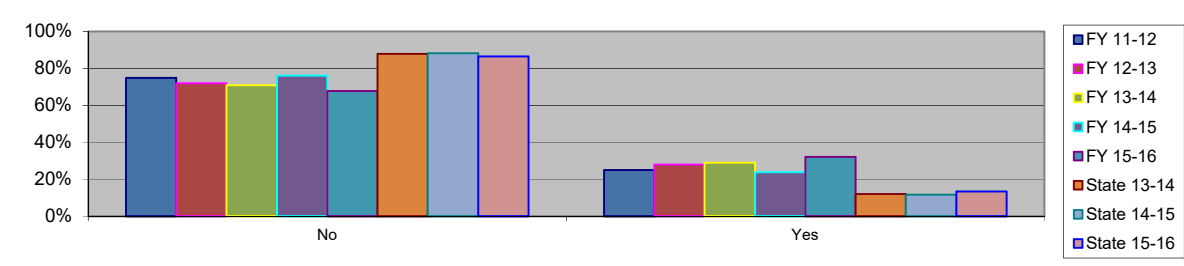
Observations:

R4 - Prior Assaults	FY 11-12	FY 12-13	FY 13-14	FY 14-15	FY 15-16	State 13-14	State 14-15	State 15-16
No assaults	88%	86%	81%	76%	72%	83%	82%	81%
Involvement in an affray	1%	1%	2%	2%	2%	3%	3%	3%
Yes, without a weapon	9%	11%	13%	16%	16%	12%	12%	13%
Yes, without a weapon, inflicting serious injury	0%	0%	2%	2%	3%	1%	1%	1%
Yes, with a weapon	2%	2%	2%	4%	8%	1%	1%	1%
Yes, with a weapon, inflicting serious injury	0%	0%	0%	0%	0%	0.002	0%	0%



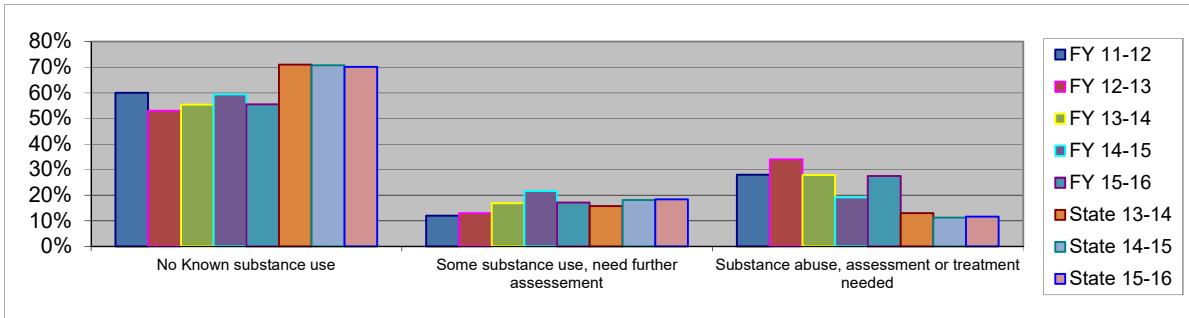
Observations:

R5 - Runaway from Home or Placement	FY 11-12	FY 12-13	FY 13-14	FY 14-15	FY 15-16	State 13-14	State 14-15	State 15-16
No	75%	72%	71%	76%	68%	88%	88%	86%
Yes	25%	28%	29%	24%	32%	12%	12%	14%



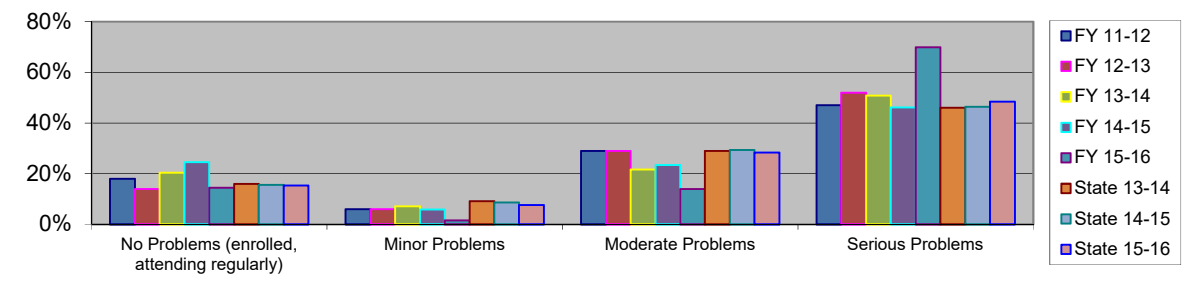
Observations:

R6 - Known Use of Alcohol or Illegal Drugs (prior 12 months)	FY 11-12	FY 12-13	FY 13-14	FY 14-15	FY 15-16	State 13-14	State 14-15	State 15-16
No Known substance use	60%	53%	55%	59%	55%	71%	71%	70%
Some substance use, need further assessment	12%	13%	17%	22%	17%	16%	18%	18%
Substance abuse, assessment or treatment needed	28%	34%	28%	19%	27%	13%	11%	12%



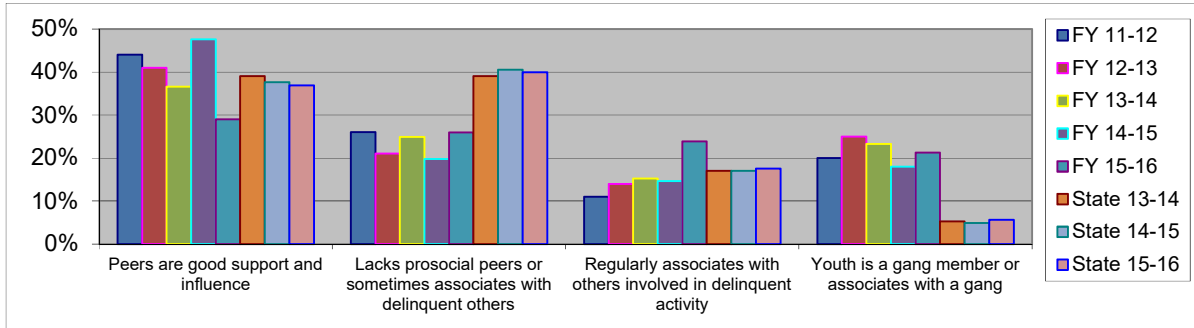
Observations:

R7 - School Behavior Problems (prior 12 months)	FY 11-12	FY 12-13	FY 13-14	FY 14-15	FY 15-16	State 13-14	State 14-15	State 15-16
No Problems (enrolled, attending regularly)	18%	14%	20%	25%	15%	16%	16%	15%
Minor Problems	6%	6%	7%	6%	2%	9%	9%	8%
Moderate Problems	29%	29%	22%	23%	14%	29%	29%	28%
Serious Problems	47%	52%	51%	46%	70%	46%	46%	48%



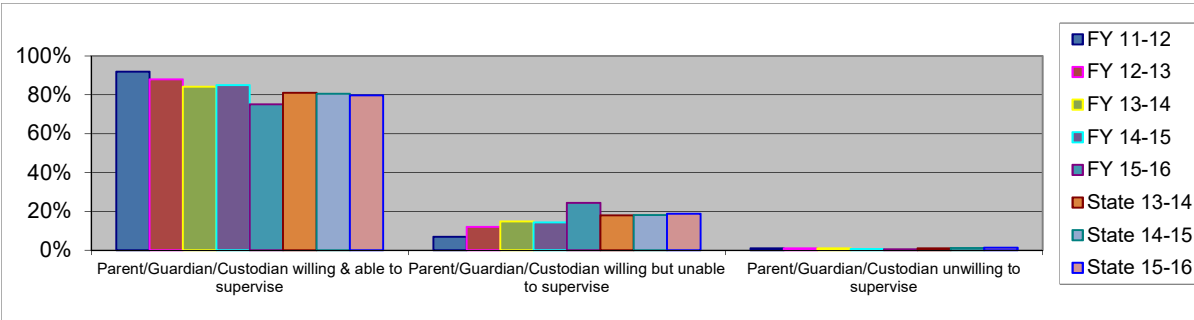
Observations:

R8 - Relationships with Peers	FY 11-12	FY 12-13	FY 13-14	FY 14-15	FY 15-16	State 13-14	State 14-15	State 15-16
Peers are good support and influence	44%	41%	37%	48%	29%	39%	38%	37%
Lacks prosocial peers or sometimes associates with delinquent others	26%	21%	25%	20%	26%	39%	41%	40%
Regularly associates with others involved in delinquent activity	11%	14%	15%	15%	24%	17%	17%	18%
Youth is a gang member or associates with a gang	20%	25%	23%	18%	21%	5%	5%	6%



Observations:

R9 - Parental Supervision	FY 11-12	FY 12-13	FY 13-14	FY 14-15	FY 15-16	State 13-14	State 14-15	State 15-16
Parent/Guardian/Custodian willing & able to supervise	92%	88%	84%	85%	75%	81%	81%	80%
Parent/Guardian/Custodian willing but unable to supervise	7%	12%	15%	14%	24%	18%	18%	19%
Parent/Guardian/Custodian unwilling to supervise	1%	1%	1%	1%	1%	1%	1%	1%



Observations: